

Accessories to temperature sensors Connecting flanges Type 991

APPLICATION

- To install rod temperature sensors with metal or ceramic protective tube enabling a sliding movement of the sensor, which can be used when adjusting the immersion length of the sensor inside the measured medium.

DESCRIPTION

Connecting flanges are made in several sizes pursuant to dimensions of protective tubes of rod temperature sensors. They consist of upper and lower flanges of tempered alloy, which are interconnected with two screws. The upper flange is provided with a yoke for the connection of the protective tube of the sensor, while the lower flange is provided with inside sealing insert and is welded on the wall or weld-on piece of the technological equipment.

TECHNICAL DATA

Dimensions of connecting flanges correspond to dimensions of metal or ceramic protective tubes of rod temperature sensors.

DESIGNATION

Data on identification label

- Trademark of the manufacturer
- Product ordering number

Data on certificate of quality and completeness of the product

- Trademark of the manufacturer
- Name of the product
- Product ordering number
- Time code (Serial number).

DELIVERY

Unless agreed otherwise with the customer, every delivery includes:

- Delivery note
- Products pursuant to the purchase order
- Accompanying technical documentation in Czech:
 - o Product quality and completeness certificate, which also serves as the warranty certificate
 - o Identification label
 - o Product manual

PACKING

Flanges are delivered welded in the package ensuring resistance to the impact of temperature effects and mechanical effects pursuant to controlled packing regulations. They are not packed individually.

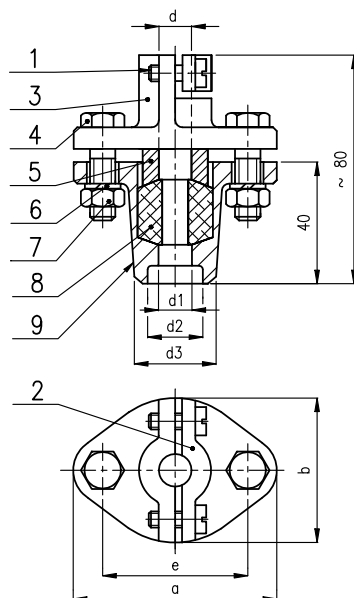
TRANSPORT

Flanges may be transported on conditions corresponding to the set of conditions of classes IE 21 pursuant to EN 60721-3-2 (i.e. by airplanes and trucks; in areas that are ventilated and protected against atmospheric effects).

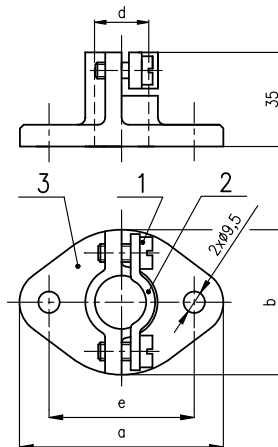
STORAGE

Flanges may be stored on conditions corresponding to the set of combinations of classes IE 11 pursuant to EN 60721-3-1 (i.e. in places with continuous temperature control between 5 and 40 °C and humidity from 5 to 85%, without a special threat of an attack with biological agents and not situated close to sources of dust and sand.)

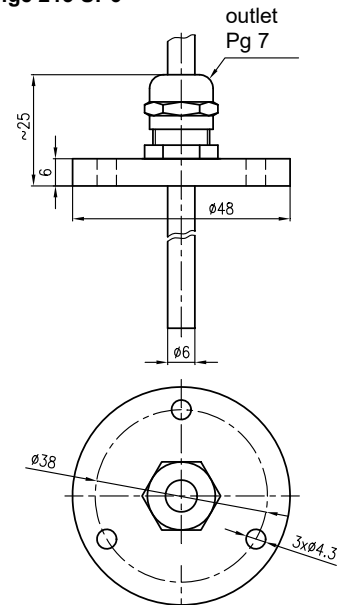
FIGURE 1 - Flange UP 14, UP 22, UP 32



Flange UP18



Flange 213 UP6



Materials:

- 1 - Screw ISO 1207 - M6×14-5.8-A (2 pcs)
- 2 - Yoke - steel class 11 color with aluminum content
- 3 - Upper flange - tempered alloy with color with aluminum content
- 4 - Screw ISO 4014-M8×30-5.8-A (2 pcs)
- 5 - Insert - steel class 11 with galvanic zinc coating
- 6 - Washer 8 ČSN 02 1740.05 (2 pcs)
- 7 - Nut M8 ČSN ISO 4034-M8-5-A (2 pcs)
- 8 - Sealing – glass-ceramic insulation cord
- 9 - Lower flange - tempered alloy with color with aluminum content

Materials:

flange: aluminium alloy, chromated and painted with aluminium paint
outlet: nickel-coated brass

PLACING AN ORDER

The purchase order shall include:

- Name
- Product ordering number
- Number of pieces

ORDER EXAMPLE:

Connecting flange 991 UP 14 – 10 pcs

TABLE 1 - OVERVIEW OF DESIGNS AND ORDERING OF CONNECTING FLANGES:

Type	Ød [mm]		Ød1 [mm]		Ød2 [mm]	Ød3 [mm]	a [mm]	b [mm]	e [mm]	Weight [kg]	Ordering number
	Nominal dimension	Actual dimension	Nominal dimension	Actual dimension							
UP 14	14	15	14	17	28	34	75	50	55	0,51	991 UP 14
UP 18	18	19	-	-	-	-	75	50	55	0,22	991 UP 18
UP 22	22	24	22	24	36	45	90	65	70	0,70	991 UP 22
UP 32	32	33	26	28	36	45	90	65	70	0,71	991 UP 32
213UP6	6										991 213 UP6

TABLE 2- APPLICATION OF CONNECTING FLANGES TO TEMPERATURE SENSORS OF ZPA Nová Paka a.s.

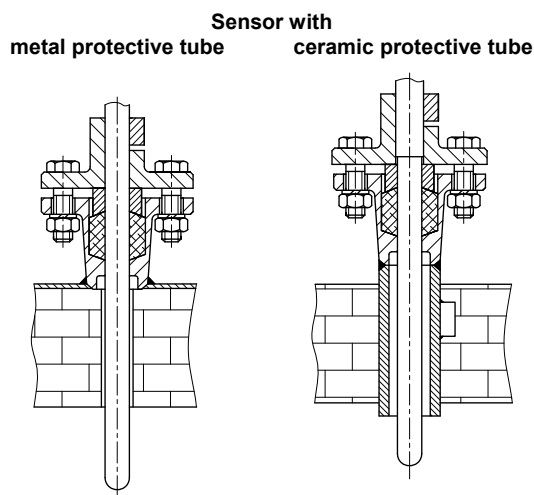
Type of connecting flanges	Type number of resistance (thermoelectric) temperature sensor
UP 14	113 40, 113 41, 251, 252, 351, 352
UP 18	301
UP 22	251, 252, 351, 352
UP 32	113 36, 113 36/P
213 UP6	213

INSTALLATION AND CONNECTION

Examples of installation of connecting flanges for rod sensors with metal and ceramic protective tube are in Fig. 1.

Weld the bottom part of the flange onto the wall of the technological equipment. In case of the flange of type UP 18, connect it to the technological equipment by means of two screws M8.

In the connecting flanges, the sensor can be moved after releasing two screws M6×14, whereby the required immersion of the sensor can be adjusted.

FIGURE 1 – EXAMPLES OF INSTALLATION OF CONNECTING FLANGES FOR ROD SENSORS WITH METAL AND CERAMIC PROTECTIVE TUBE

The installation of flanges is made by welding the bottom part of the flange onto the wall of the technological equipment or, in case of using the flange of type UP 18, by connecting with the use of two screws M8.

In the connecting flanges, the sensor can be moved after releasing two screws M6×14, whereby the required immersion of the sensor can be adjusted.

Recommended welding electrodes: OK 92.18 or OK 92.60.

COMMISSIONING

Flanges do not require any operation and maintenance.

SPARE PARTS

Flanges do not require any delivery of spare parts.

WARRANTY

The warranty period is 24 months from the receiving of the product by the customer, unless established otherwise in the contract. The rejection of defects shall be enforced in writing at the manufacturer within the warranty period. The rejecting side shall identify product name, ordering and manufacturing numbers, date of issue and number of the delivery note, clear description of the occurring defect and subject of the claim. If the rejecting side is invited to send the device for repair, it shall do so in the original package of the manufacturer and/or in another package ensuring safe transport.

The warranty shall not apply to defects caused by unauthorized intervention into the device, its forced mechanical damage or failure to comply with operation conditions of the product and the product manual.

REPAIRS

Flanges do not require any repair.

DISABLING AND LIQUIDATION

The product and its package do not include any parts that could impact the environment.

The products withdrawn from the operation (including their packing) can be disposed of to sorted or unsorted waste pursuant to the type of waste.

Product package and metal parts of the product shall be recycled.

November 2017
© ZPA Nová Paka, a.s.